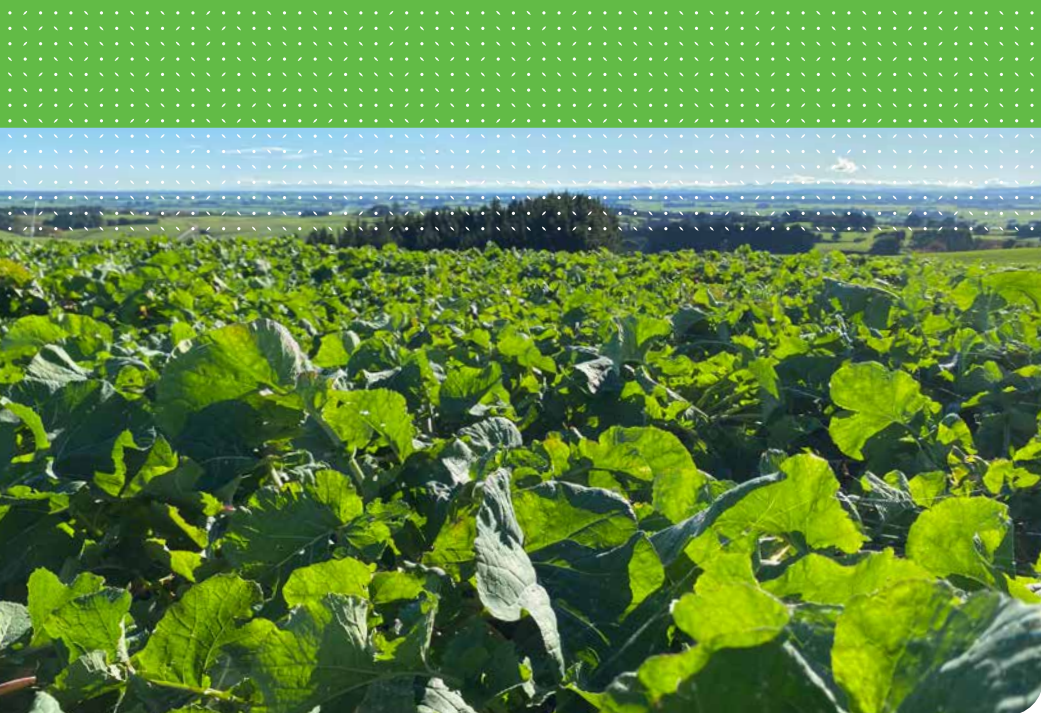


# Information & Performance Guide





## AN EARLY MATURING, SOFT BULBED SWEDE

Cleancrop™ Aspiring swede, is a soft, early maturing, yellow-fleshed swede, offering a Cleancrop™ swede option for those farmers that prefer the bulb softness traditionally seen in Major Plus and more recently Earnslaw swede. Relative to Major Plus, Cleancrop™ Aspiring swede offers improved dry-rot and *Alternaria* tolerance, with the ability to control weeds through adoption of the Cleancrop™ Brassica System. The combination of soft bulb and greater disease tolerance makes Cleancrop™ Aspiring an option for all stock classes including younger stock when swedes are being used.

### Key characteristics:

- Early maturing, main crop swede
- Soft bulb relative to later maturing swedes
- Ability to control weeds included in the Cleancrop™ Brassica System
- Improved disease resistance to dry-rot and *Alternaria* compared to Major Plus
- Improved leaf and bulb yield over Major Plus
- Yellow-fleshed, light, purple-skinned bulb
- Pelleted seed available

### Farm type



### Seasons



GROWING

**Spring, Summer**

GRAZING

**Autumn, Winter**

### Days to grazing



**From 150-220 days**

NUMBER OF GRAZINGS

**1**

### Sowing rate



CONVENTIONAL SOWING  
OR DIRECT DRILLING

**0.8-1.5 kg/ha**

PELLETED

**90,000 seeds/ha**

POTENTIAL YIELD

**18,000 kgDM/ha**

UTILISATION

**80%**

### Appearance



FLESH COLOUR

**Yellow**

# Trial results

## DRY MATTER PRODUCTION

Multiple years of trialling across two trial sites at Gore and Methven has shown that Cleancrop™ Aspiring has consistently performed as well as the later maturing swede cultivars such as Cleancrop™ Hawkestone and Clutha Gold. Cleancrop™ Aspiring, when used in the absence of the Cleancrop™ Brassica System, has the same yield performance as the non-Cleancrop™ cultivar, Earnslaw, both of which have improved dry matter yield over the traditional soft fleshed swede, Major Plus. This is evident in the below graph which showcases trial data in the absence of Telar®.

### Average yield (kg DM/ha) of swede cultivars for both leaf and bulb

This trial data is in the absence of Telar®



Multi-site analysis of 8 trials (Methven and Gore 2019/20, 2020/21, 2021/22, 2022/23). LSD(0.05) Leaf yield 483 kg DM/ha and Stem Yield 1459 kg DM/ha

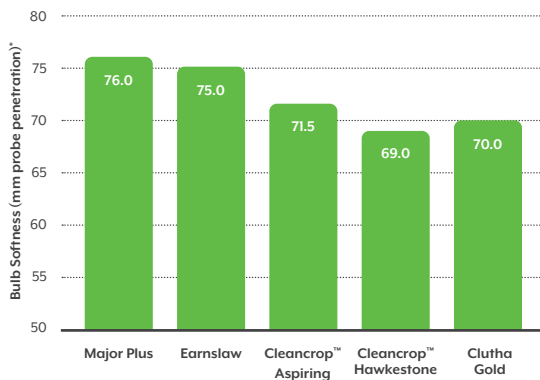




## BULB SOFTNESS

Cleancrop™ Aspiring has trended to have a softer bulb than later maturing types, which is measured by an instron probe with differences in bulb softness noted by the depth the probe penetrates into bulb. Thus, if a softer swede bulb option is needed, with weed control, then Cleancrop™ Aspiring will be an ideal fit.

### Swede bulb softness



\*Higher value = softer bulbs

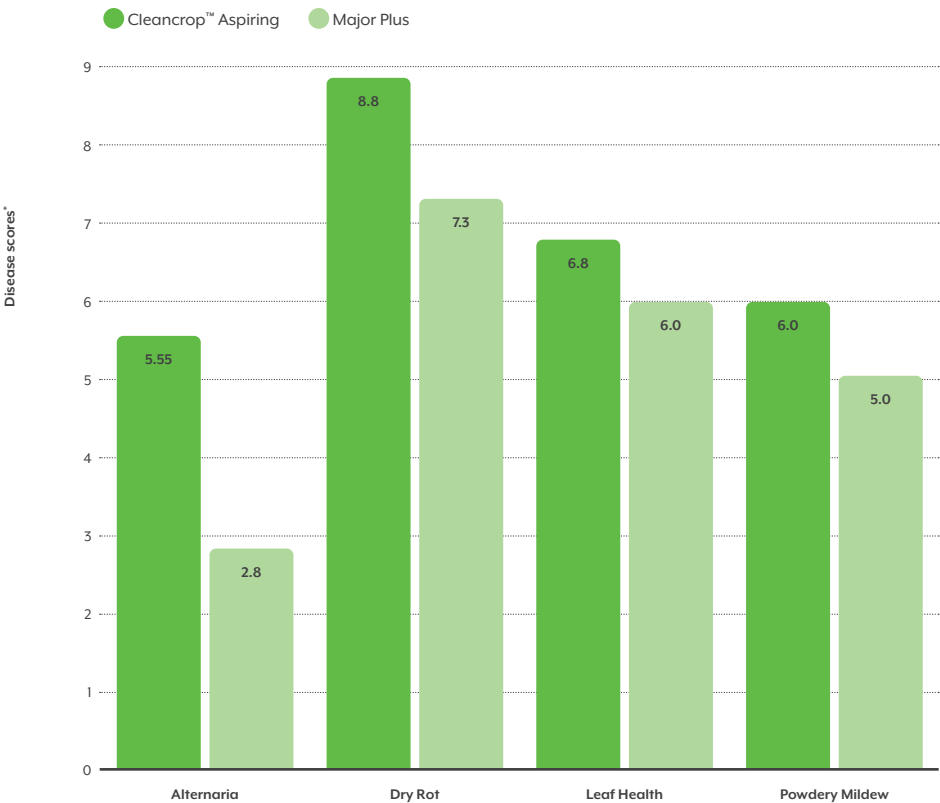
Average swede bulb softness results from 4 years of testing at Plant and Food Research Lincoln (2020, 2021, 2022, 2023). LSD 5% = 4.1 differences between cultivars must exceed LSD to be statistically different.

# Trial results

## DISEASE SCORES

Cleancrop™ Aspiring was bred to provide an alternative option to Major Plus with weed control afforded by the Cleancrop™ Brassica System. But as a cultivar it has not only higher yield but has significant improvements in disease resistance to Major Plus.

**Disease scores taken from Gore (Alternaria 2021/22, 2022/23, and Powdery mildew 2021/22) and Methven (Dry Rot and Leaf health 2021/22). 9 = no disease, 0 = damage to every plant**



*Disease scores were taken from two sites: Gore for Alternaria (Average of years 2021/22, 2022/23), Gore 2021/22 for Powdery Mildew and Methven 2021/22 for Dry Rot and Leaf health. LSD (0.05), Alternaria 1.2, Dry Rot 0.9, Leaf Health 1.1, Powdery Mildew 1.7*

# Swede overview

Swedes are a spring sown, single graze option providing winter feed suited to cool, moist environments.

Swedes can be divided into two categories: soft bulbed, early maturing cultivars (e.g. Earnslaw or Cleancrop™ Aspiring) or later maturing types (e.g. Clutha Gold or Cleancrop™ Hawkestone).

Swedes are more susceptible to diseases including clubroot and dry rot, so should only be considered as a first year cropping option.

## WHEN TO SOW?

In environments where crops can be exposed to very cold conditions post-sowing, followed by increasing temperatures, swedes should be sown no earlier than 20 November.

Earlier sowing combined with cold weather conditions can cause 'vernalisation' which means the plant believes it has been through winter and subsequently produces a seed head.

	High yield and early maturity	High yield and medium maturity	Moderate yield and early maturity	High yield, medium maturity and Telar <sup>®</sup> herbicide resistance	High yield, early maturity and Telar <sup>®</sup> herbicide resistance
					
Potential yield (tDM/ha)	18	18	16	18	18
Days to grazing	150-220	170-250	150-220	170-250	150-220
Bulb softness	★★★	★★	★★★	★★	★★★
Flesh colour	Yellow	Yellow	Yellow	Yellow	Yellow
Clubroot tolerance	★	★★	-	★★	N/A
Dry rot tolerance	★★	★★	-	★★	★★
Leaf keeping quality	★★	★★	★	★★	★★

## STAR CHART KEY

— = None | ★ = Moderate | ★★ = Good | ★★★ = Very good

Note: a difference of one ★ means that there is statistically significant difference.



*PGG Wrightson Seeds Ltd (PGW Seeds) provides no assurance, guarantee, representation or warranty in relation to any advice, information, service, seed, endophyte, product or treatment (together Material) other than those that must be provided by law. To the extent permitted by law PGW Seeds excludes or limits liability (including for indirect and consequential loss) on any basis (including in negligence and under any enactment) from or in relation to the Material and any remaining liability shall not exceed twice the amount received by it in relation to the Material.*

© PGG Wrightson Seeds.



[facebook.com/pggwrightsonseeds](https://facebook.com/pggwrightsonseeds)



[pggwrightsonseeds](https://pggwrightsonseeds)

#### **FURTHER INFO:**

Refer to the Cleancrop™ Guide on our website for more information or email us with your details and we'll send you a copy.



[pggwrightsonseeds.com](https://pggwrightsonseeds.com) | [info@pggwrightsonseeds.co.nz](mailto:info@pggwrightsonseeds.co.nz) | Freephone 0800 805 505